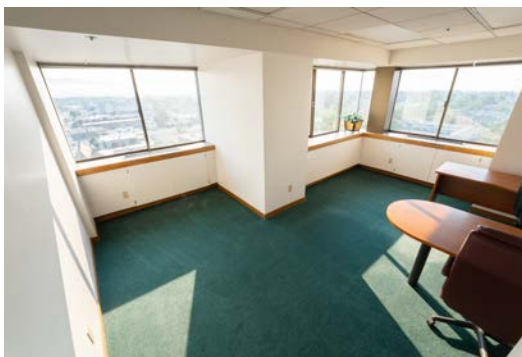


AVAILABLE COMMERCIAL SPACE

# THE TOWER | SUITE 1100/11

402 E Yakima Avenue  
Yakima, WA 98901



## 6,890 TOTAL SQUARE FEET

Flexible space encompasses an entire floor. Lobby and reception area. Conference and break room. Many private offices.

- Secured building with keycard/pad entry
- Large conference room
- Great city views
- Signage available
- Open-concept inner office area
- Professionally managed



Excellent access to I-82 and transit center



Numerous restaurants, hotel, and retail amenities



Located in the heart of downtown

# JEM

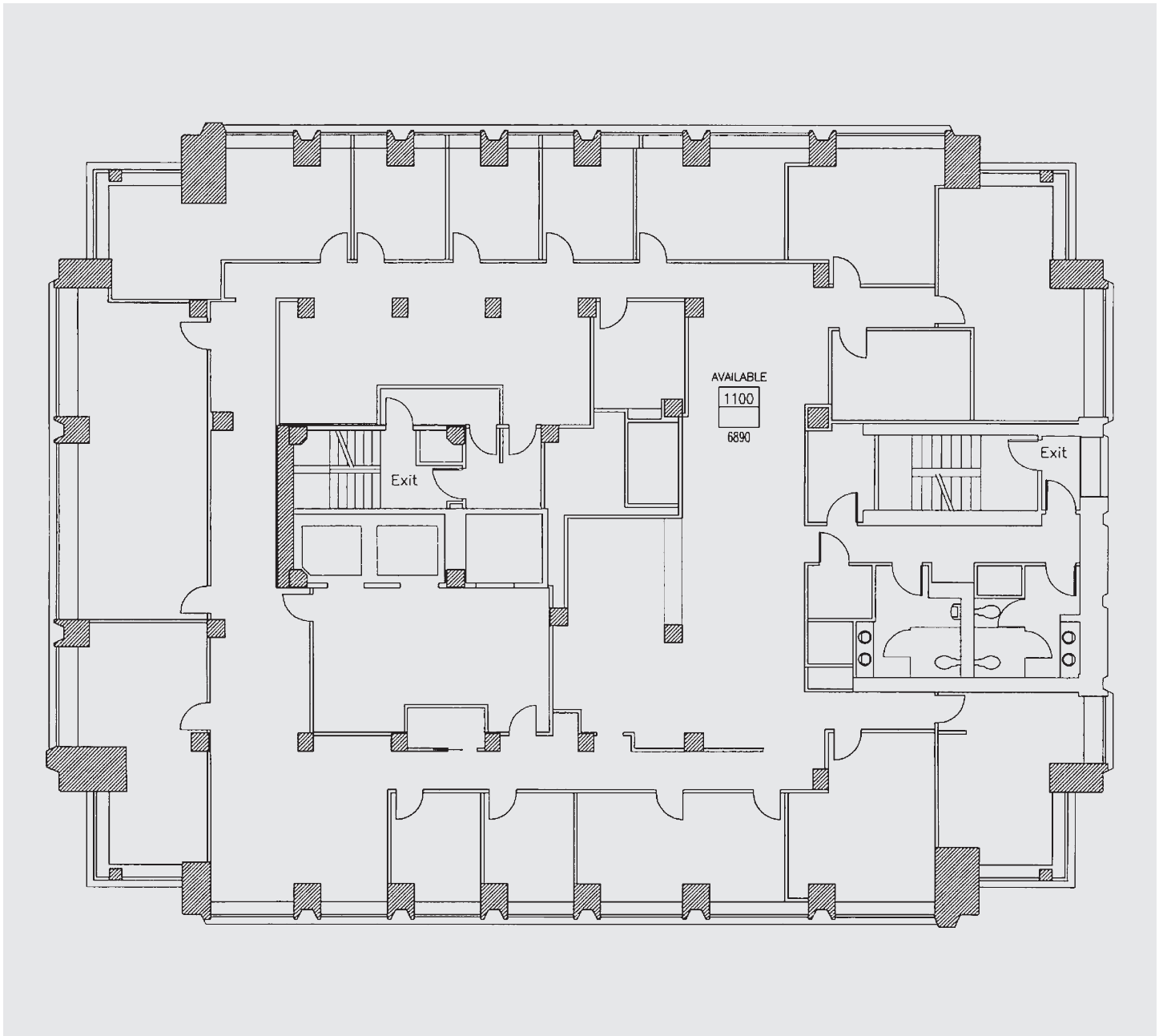
DEVELOPMENT  
REAL ESTATE INC.

Contact Elizabeth M. McGree at 509.248.4040 x104 | [jemdevelopment.com](http://jemdevelopment.com)

AVAILABLE COMMERCIAL SPACE

# THE TOWER | SUITE 1100/11

402 E Yakima Avenue  
Yakima, WA 98901



# JEM

Contact Elizabeth M. McGree at 509.248.4040 x104 | [jemdevelopment.com](http://jemdevelopment.com)

DEVELOPMENT  
REAL ESTATE INC.