

COMMERCIAL
SPACE

AVAILABLE

Suite 1100/11

402 East Yakima Avenue | Yakima, WA 98901



PROPERTY FEATURES

SUITE 1100/11 | 6,890 SF

Flexible space encompasses an entire floor. Lobby and reception area. Conference and break room. Many private offices.

- + Secured building with keycard/pad entry
- + Great city views
- + Open-concept inner office area
- + Large conference room
- + Signage available
- + Parking available
- + Professionally managed
- + On-site deli/coffee

AREA AMENITIES

- + Excellent access to I-82 and transit center
- + Numerous restaurants, hotel and retail amenities
- + Located in the heart of downtown Yakima

AVAILABLE
800

AVAILABLE 509.271.1111
jemdevelopment.com

JEM

DEVELOPMENT

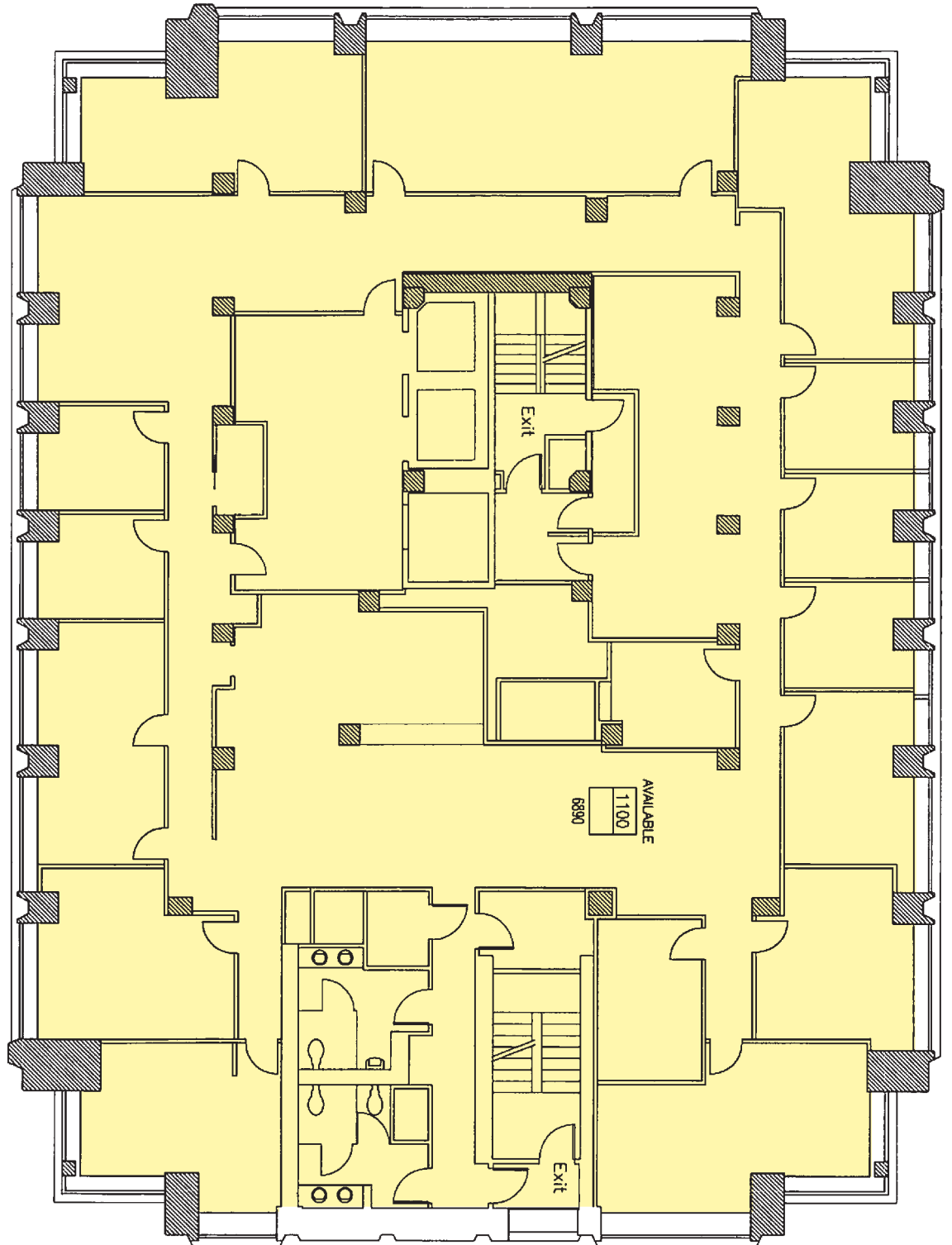
Contact: Elizabeth M. McGree | 509.248.4040 ext. 104 | lizmcgree@jemdev.com

COMMERCIAL
SPACE

AVAILABLE

Suite 1100/11

402 East Yakima Avenue | Yakima, WA 98901



JEM

DEVELOPMENT

Contact: Elizabeth M. McGree | 509.248.4040 ext. 104 | lizmcgree@jemdev.com