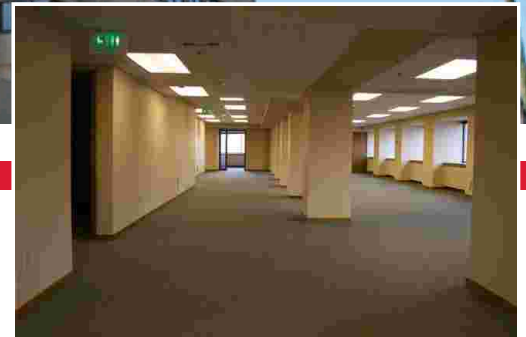


COMMERCIAL  
SPACE

# AVAILABLE

Suite 500/5

402 East Yakima Avenue | Yakima, WA 98901



## PROPERTY FEATURES

SUITE 500/5 | 1,799 SF

- + Secured building with keycard/pad entry
- + Great city views
- + Open space with kitchenette
- + Signage available
- + Parking available
- + Professionally managed
- + On-site deli/coffee

## AREA AMENITIES

- + Excellent access to I-82 and transit center
- + Numerous restaurants, hotel and retail amenities
- + Located in the heart of downtown Yakima



jemdevelopment.com

# JEM

DEVELOPMENT

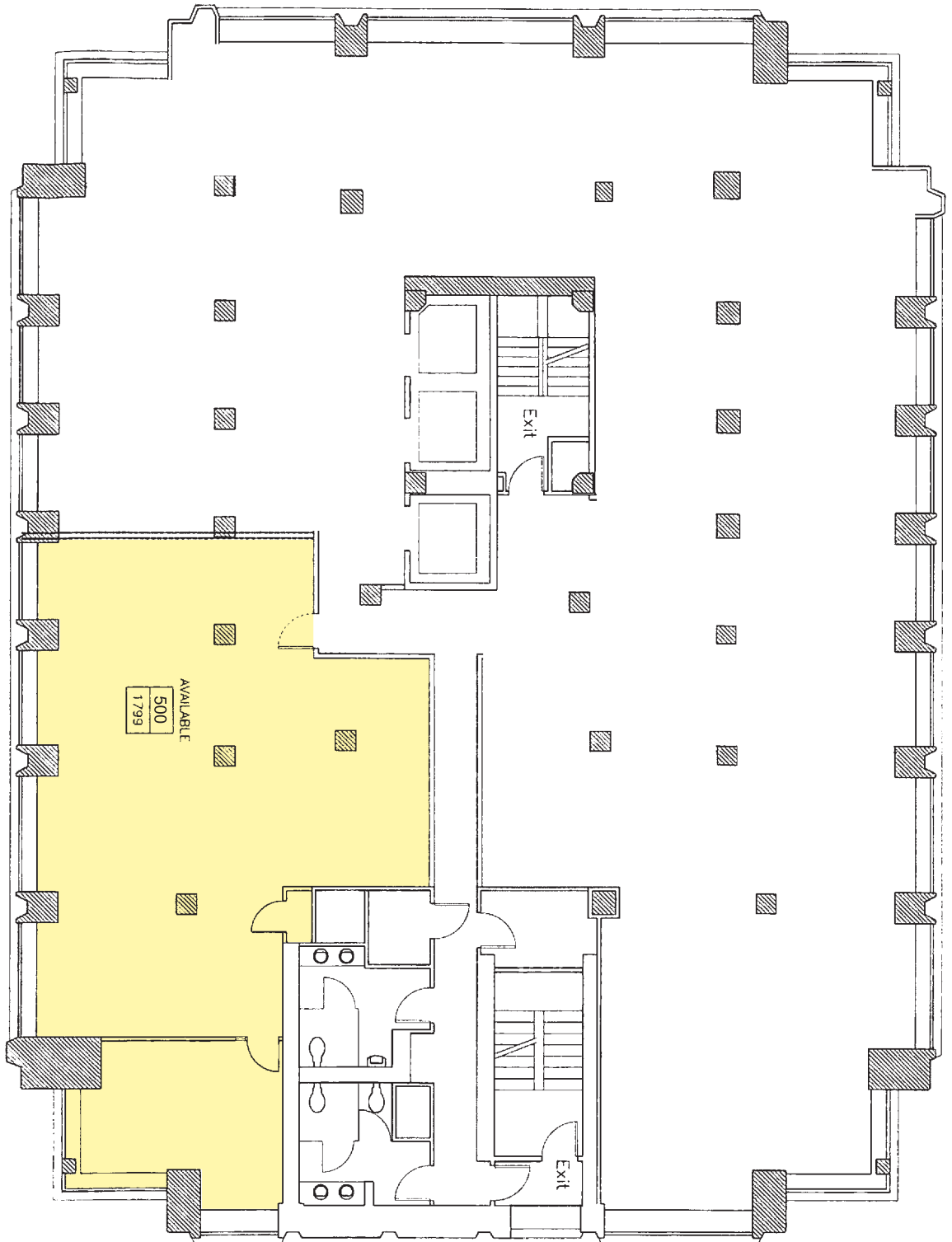
Contact: Elizabeth M. McGree | 509.248.4040 ext. 104 | lizmcgree@jemdev.com

COMMERCIAL  
SPACE

# AVAILABLE

Suite 500/5

402 East Yakima Avenue | Yakima, WA 98901



# JEM

DEVELOPMENT

Contact: Elizabeth M. McGree | 509.248.4040 ext. 104 | [lizmcgree@jemdev.com](mailto:lizmcgree@jemdev.com)